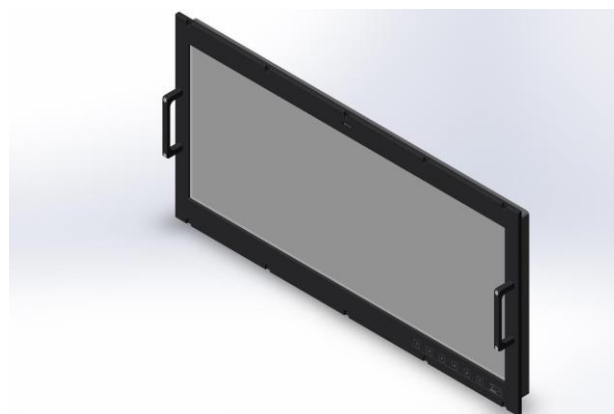


# Technical datasheet

- **Console Mount Monitor**
- **34" Monitor 3440 x 1440 (LED BL system)**
- **designed for 24/7 operation**
- **designed for naval application**



**Part no.:** 62-702-00-22  
**Description:** BP 834DUXGA-DD-AC

preliminary  
 Ver.:1.2

| Optical Characteristic                                 | Power Supply   |
|--|--|
| Display Diagonal: 34" (86,3 cm)                        | Input voltage: 115 / 230 VAC, 50/60 Hz                                 |
| Resolution: 3440 x 1440 (21:9)                         | Connector: IEC C14 inlet   |
| Viewing angle: L/R/U/D 89°/89°/89°/89°                 | Grounding: M6 ground stud  |
| Color Depth: 16 Mio. colors / 256 grey scale           | Power consumption :  |
| Contrast typ.: 1000:1                                  | VA typ.: 93 VA   |
| Response time typ.: 14ms (25°C)                        | Watt typ.: 53 W  |
| Brightness typ.: 250 cd/m <sup>2</sup>                 | Environment  |
| Dimming: 200:1   | Temperature:   |
|  | Operating : -15 to 50°C  |
|  | Storage : -30 to +70°C   |
| Interfaces / connections                               | Humidity: 5-95% @40°C (not condensing)                                 |
| HDMI: 2 x HDMI (V2.0) ; HDMI                           |  |
| DP: 2 x Display Port (V1.2) ; (DisplayPort)            | EMI/EMC: CE;EN 55022;EN 61000-6-2                                      |
|  | IEC 60945  |
| Serial: 1 x RS232 (remote) 9 p. D-Sub                  | Vibration: IEC 60945 0,5 G rms 5-200 Hz                                |
|  | Shock: MIL-STD 810 +/- 10G/11ms half sine                              |
| OSD Keyboard: foil keyboard (front side)               | Other  |
|  | MTBF: 27450 hour , naval Sheltered @25°C                               |
|  | Ground concept: Grounded (Logic ground connected to Chassis)           |
| Front & Chassis  | Qualification  |
| Aluminum housing: Front plate IP 65 / cabinet IP 23    | CE   |
| Cooling concept: convection cooling (no Fan, no noise) | IEC 60945  |
| Finish: RAL 9005 (black)                               | Tempest level C (powerline)  |
| Protection glass: AG coated / toughned                 | Options  |
| Mounting: Console mount                                | customization on request;DC Power Input;Handles;optical bonding;Stands |
| Dimension in mm: (HxWxD) 444 x 870,5 x 83,5            | Accessory  |
| Weight in kg: 15,6 kg                                  | Handles  |

# Mechanical Dimension:

