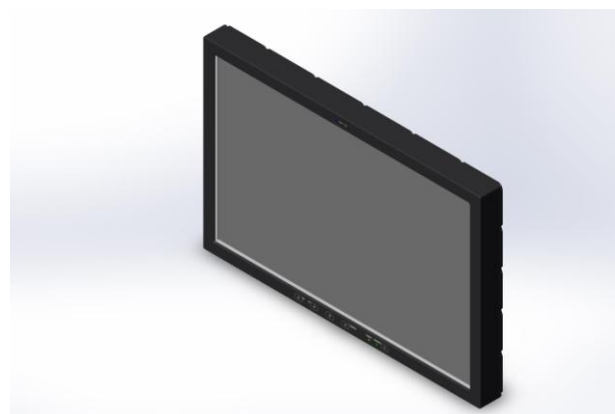


# Technical datasheet

- Rugged Monitor (VESA mount)
- 24" Monitor 1920x1200 (LED BL System)
- Designed for 24/7 operation
- TL 361 compatible



Part no.: 32-265-00-22  
 Description: BRL 824-1610SVM-AC

preliminary  
 Ver.:0.9

Optical Characteristic		Power Supply	
Display Diagonal:	24" (60,9 cm)	Input voltage:	115 / 230 VAC, 50/60 Hz
Resolution:	1920 x 1200 (16:10)	Connector:	MS27466 T 09F98P /38999
Viewing angle:	L/R/U/D 89°/89°/89°/89°	Grounding:	M4 ground stud
Color Depth:	10 Bit / 1,07 Billion color	Power consumption :	
Contrast typ.:	1500:1	VA typ.:	tbd.
Response time typ.:	18 ms (25°C)	Watt typ.:	45W
Brightness typ.:	300 cd/m <sup>2</sup>	Environment	
Dimming:	100:1	Temperature:	
		Operating :	-15 to 50°C
		Storage :	-30 to +70°C
Interfaces / connections		Humidity:	5-95% @40°C (not condensing)
DVI:	1 x DVI ; (DVI-D)	EMI/EMC:	CE;EN 55022;EN 61000-6-2
DP:	1 x Display Port ; (DisplayPort)		MIL-STD 461 (BTM, naval below deck)
RGB:	1 x VGA ; (15 p. HD-Sub)	Vibration:	MIL-STD 810 10-57HZ / 0,076mm 57-500Hz / 9,8m/s <sup>2</sup> (BTM)
Serial:	1 x RS232 (remote) ; (9 p. D-Sub)	Shock:	MIL-STD 810 +/- 20G/10ms x/y/z half sine (BTM)
OSD Keyboard:	Foil keyboard (front side)	Other	
Combat dimmer:	Backlight and status LED can be switched on/off with a single pushbutton	MTBF:	27500 hour , Naval Sheltered @25°C
		Ground concept:	Grounded (Logic ground connected to chassis)
Front & Chassis		Qualification	
Aluminum housing:	Front plate IP 65 / cabinet IP 65		CE
Cooling concept:	Passive cooling (no fan, no noise)		MIL-STD 461-D (BTM);MIL-STD 810 (BTM)
Finish:	RAL 9005 (black)		
Protection glass:	AR coated glass pane w. EMC filter	Options	
Mounting:	VESA mount		Customization on request;DC power input;touch screen
Dimension in mm:	(HxWxD) 374 / 568 / 83,5 mm	Accessory	
Weight in kg:	tbd.		

# Mechanical Dimension:

